

BGDISC

Bruce Grey Data Information Sharing Collaborative

SUMMER 2018

What's new?

In Spring of 2018:

- We added more data and information to the holdings
- We continued to improve the website:
- We started the recruitment process for an contract Open Data Analyst to support training new agencies coming on board. <https://bgdisc.ca>
- We continued to reach out to local agencies to join the collaborative, delivering presentations at local agency meetings

Vision

Data assists well-informed decision-making, contributing to prosperity and well-being for the Community of Bruce Grey.

What's Next?

In Summer 2018:

- We are hiring an Open Data Analyst—see next page for more details
- We are actively encouraging new membership and the posting of new data holdings to the website
- We're adding new content and finding new ways of sharing information through Data Stories

What Are We About?

BGDISC is a collective of not-for-profit, social-service, government, health, and education organizations that seek to mobilize community decision-makers to share vital local rural data to better inform regional programming, policies, funding, and social services to support prosperity, sustainability and the well-being of the community.

Visit the site at:
<https://BGDISC.ca>

Who is on the Advisory Committee?

Community Foundation Grey Bruce

Grey Bruce Children's Alliance

Four County Labour Market Planning Board

County of Grey

County of Bruce

Healthy Communities Partnership

Grey Bruce Health Unit

Join our mailing list for updates and newsletters.

Subscribe Now!

What's been added so far?

- Grey County Trails
- Grey County Official Plan GIS Data
- Grey County Roads Data
- Grey County Rural Business Listing
- Grey County Children's Services Overview
 - Grey County Early Development Instrument Results
 - Grey County Children's Services Overview
- Child Care Waitlist
- Alcohol Vendors Grey Bruce
- Food Security Assets
- EmployerOne Summary Report
- Census 2016 Results
 - Population by age and sex
 - Dwellings and Housing
 - Families, Households, Marital Status
 - Income, Labour, Commute to Work
 - Mobility, Migration
 - Immigration, Ethnocultural Diversity, Aboriginal Identity
- Backpack Program – United Way of Bruce Grey
- Utility Assistance Program – United Way of Bruce Grey

NEW SINCE SPRING:

- Grey County 211 Statistics for 2017
- A Profile of Child, Youth and Family Health in Grey and Bruce Counties

BGDISC Open Data Analyst

BGDISC is currently in the process of hiring! The Open Data Analyst will:



- work to improve the website look and feel
- research open data best practices
- promote the website
- help members learn to use the website
- build and share data stories
- educate local groups on the benefits of local data
- plan and lead a community workshop event

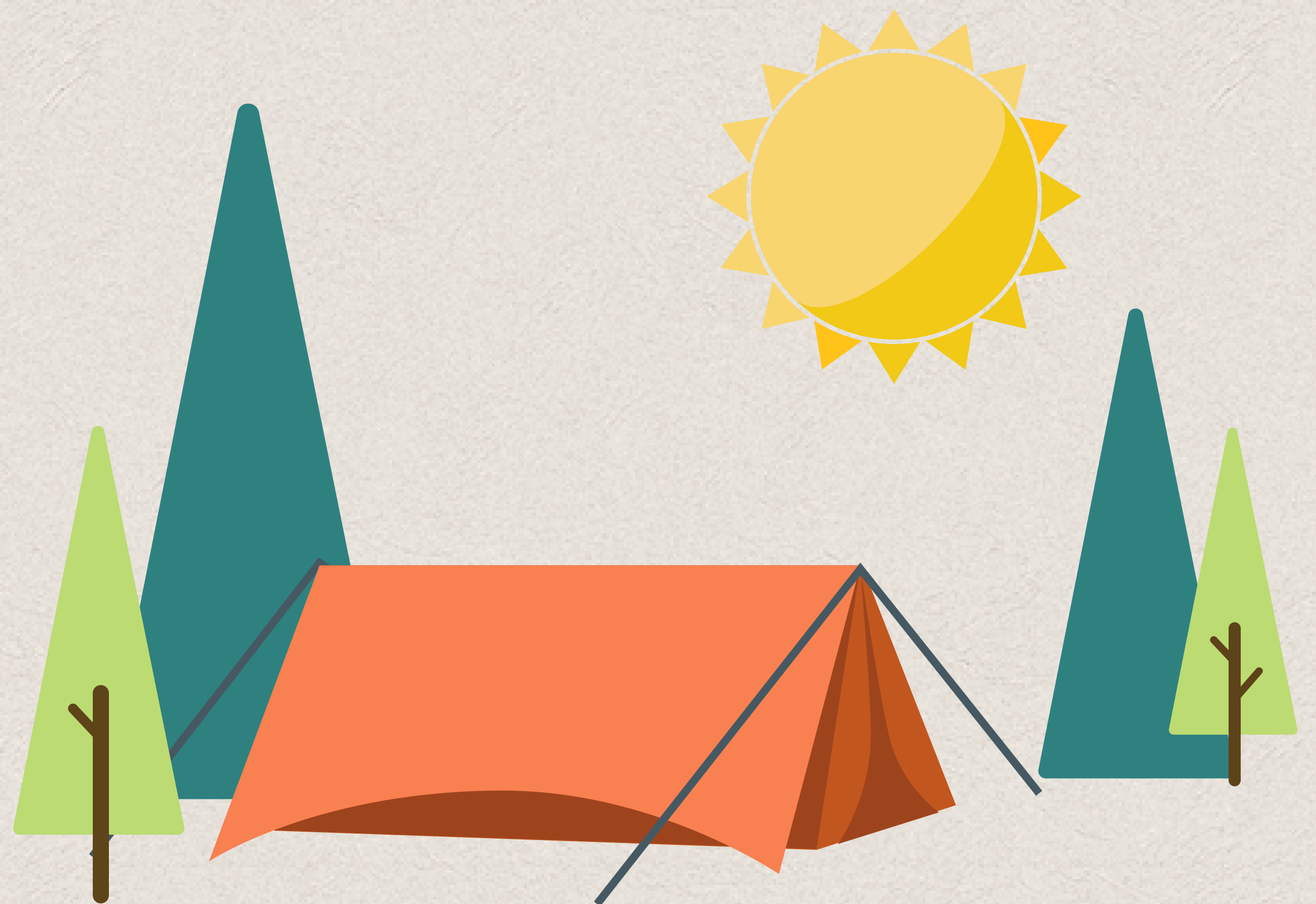


Summer and BGDISC: Presentations!

If your organization would like an introduction to BGDISC, contact Gemma at 519-881-2725 x122

Coming This Fall

- Fall Workshop
- On-site Training



Have a Safe and Healthy Summer!