

# BGDISC

Bruce Grey Data Information Sharing Collaborative

## SPRING 2018

### What's new?

In 2017:

- We received funding from both the County of Bruce and the County of Grey
- We finalized the Terms of Reference for the Collaborative
- We selected a platform and created the BGDISC website: <https://bgdisc.ca>
- We held a Soft Launch event November 20th, with promising and enthusiastic feedback

### What's Next?

In 2018:

- We are seeing more uploaded data from member organizations
- We are reviewing and revising the website to make it more user-friendly
- We are creating resource tools to help users share their data and information
- We are reaching out to local organizations and encouraging them to become members

### Vision

**Data assists well-informed decision-making, contributing to prosperity and well-being for the Community of Bruce Grey.**

### What Are We About?

BGDISC is a collective of not-for-profit, social-service, government, health, and education organizations that seek to mobilize community decision-makers to share vital local rural data to better inform regional programming, policies, funding, and social services to support prosperity, sustainability and the well-being of the community.

Visit the site at:  
<https://BGDISC.ca>

### Who is on the Advisory Committee?



Join our mailing list for updates and newsletters.

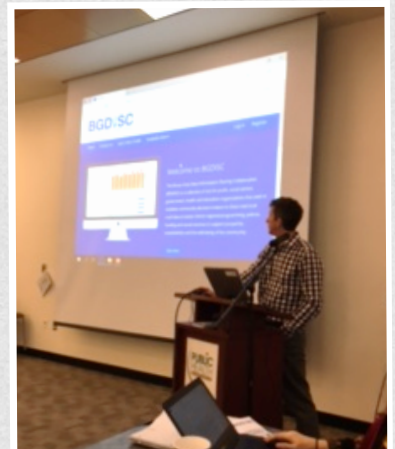
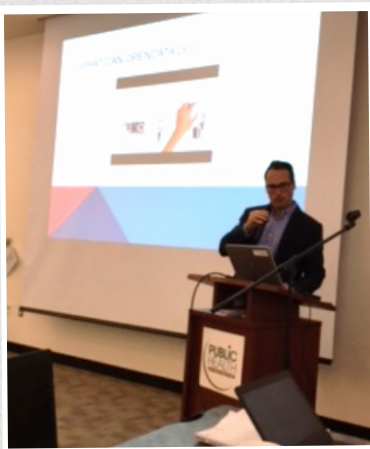
**Subscribe Now!**

## What's been added so far?

- Grey County Trails
- Grey County Official Plan GIS Data
- Grey County Roads Data
- Grey County Rural Business Listing
- Grey County Children's Services Overview
  - Grey County Early Development Instrument Results
  - Grey County Children's Services Overview
- Child Care Waitlist
- Alcohol Vendors Grey Bruce
- Food Security Assets
- EmployerOne Summary Report
- Census 2016 Results
  - Population by age and sex
  - Dwellings and Housing
  - Families, Households, Marital Status
  - Income, Labour, Commute to Work
  - Mobility, Migration
  - Immigration, Ethnocultural Diversity, Aboriginal Identity
- Backpack Program – United Way of Bruce Grey
- Utility Assistance Program – United Way of Bruce Grey

## The BGDISC Soft Launch

The Bruce Grey Data Information Sharing Collaborative hosted the BGDISC Soft Launch Event on Monday, November 20, 2017 at the Grey Bruce Health Unit in Owen Sound. Twenty-four participants from a range of community organizations attended the event, which featured presentations about open data, open data projects, and an introduction to the BGDISC site itself.



*Brad Noble (left), Barb Fedy (centre), and Jody MacEachern (right), BGDISC Steering Committee members and Soft Launch presenters.*

Presentations included: [Open Data in Our Organizations](#), [Open Data Guelph](#), and [Open Data in Grey County](#). Other information presented included the [BGDISC Terms of Reference](#), the [BGDISC Open Data License](#) and the [BGDISC Data Release Guidelines](#).

Check out this [Data Story](#) on the [BGDISC website](#) that explains how open data has helped one local community group make better use of our public spaces: [Open Data on the Road](#)